



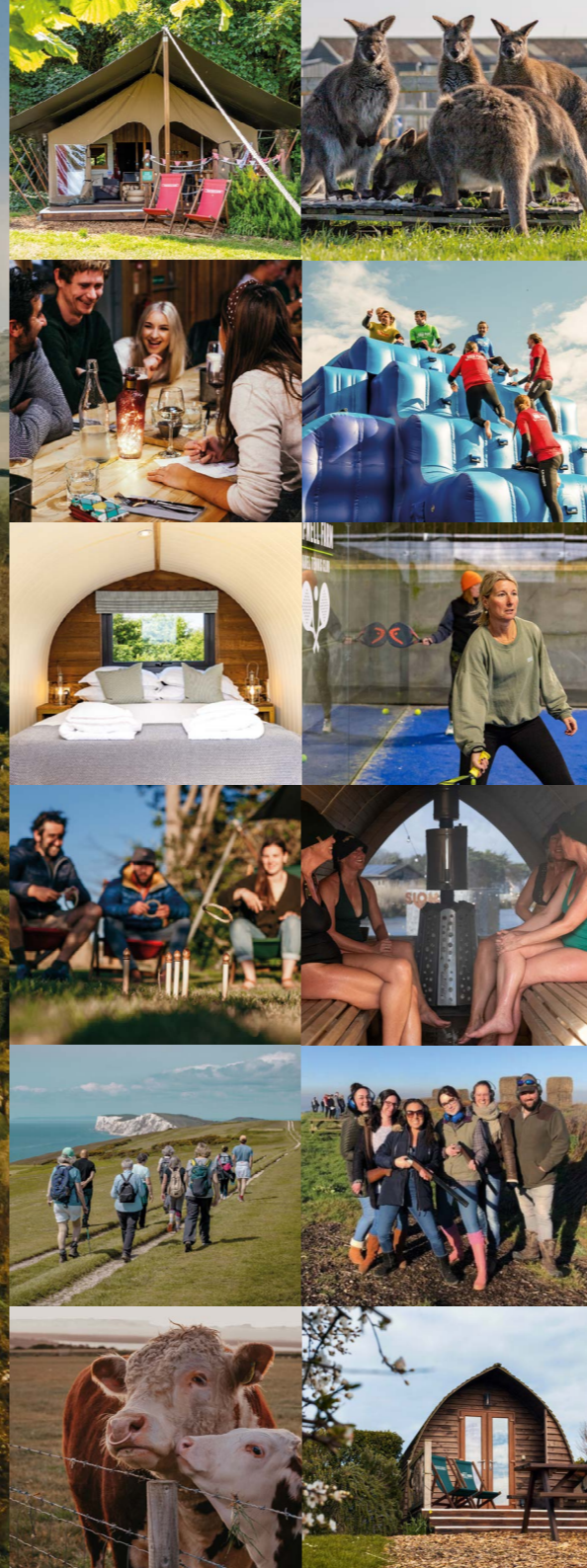
TAPNELL FARM

ISLE OF WIGHT

Corporate Away Days & Retreats

A RURAL RETREAT LIKE NO OTHER

Our family has been in farming for over one hundred years, and we took over the care of Tapnell and East Afton Farms in 1982. At its peak, the farm milked 800 cows and produced 24,000 litres of fresh wholesome milk 365 days of the year, no exceptions!



THE TURNEY FAMILY



Today we no longer milk cows at Tapnell, but run by brothers-in-law Tom Turney and Tom Honeyman Brown, the farm has become the Isle of Wight's leading eco-tourism business.

Sustainability is at the heart of everything we do, whether taking water from our bore hole to supply the farm, using the sun to make electricity for hundreds of homes, powering our heating systems with our biomass boiler or growing over 30 acres of new woodland and hedgerows.

From the start, our ethos has been to create **'maximum enjoyment with minimum impact on the environment'** and this has been true from the construction of our glamping safari tents in 2012 to the Aqua Park enjoyed by so many today.

We've never had a grand plan, we've just wanted to grow organically and to create a unique and welcoming place for everyone to enjoy the farm as we did; the fresh air, stunning views and space to explore - whilst trying to keep everything rustic and in keeping; no gadgets or gizmos... **just people powered fun!**

"The Toms"

INSPIRE, DEVELOP, REWARD, AND ENGAGE

Tapnell Farm and neighbouring sister Farm, East Afton, sit within over 800 acres of beautiful rural countryside, with amazing sea views and stunning sunsets.

Gather your team together, all in one place, and let us take the hassle out of planning, leaving you more time for the fun.

Whether you're planning a team building session, training event, awards night or corporate retreat, we can tailor a package that's perfect for your needs.



GET AWAY FROM IT ALL AND BRING THE TEAM

Whether it's for a team building away day, or a complete residential re-set, Tapnell & East Afton Farm have it all.



THE MAGIC STARTS WITH THE JOURNEY TO 'THE ISLAND!'

Sail to us by boat on one of the many cross Solent routes, or why not fly – by Hovercraft!

Tapnell Farm also has a Helipad for those quick trips + chartered cross Solent RIB crossings can be organised.

ONLY TWO HOURS FROM LONDON

But far enough to feel like you really are getting away...

Tapnell Farm is an award-winning rural resort just two hours from London and just a short (and breath-taking) ferry ride across the Solent.

Tapnell is perfectly situated in the West Wight with unrivalled views and lots of space - close enough to towns and transport links, but far enough away to feel the benefits of beautiful open spaces and room to roam.



Journey times to mainland ports
Solent crossing times: 10 minutes by hovercraft or 40-60 minutes by car ferry



Whatever the weather, we have a range of exciting activities to keep everyone entertained!



PEOPLE POWERED FUN

ONSITE AT TAPNELL FARM

Why not mix and match the sessions - whether you're here for the day or enjoying an overnight stay, our onsite activities will get everyone moving and feeling good.

From animal encounters, aqua park, and farm walking trails to local beauty spots & stunning views.

Aqua Park

Padel & Pickleball

Slomo Sauna

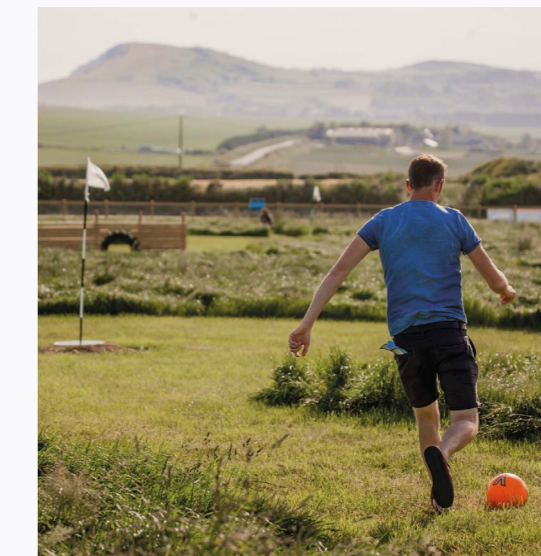
Football Golf

Clay Pigeon Shooting

Farm Park

Tapnell Trail

Cycling





PEOPLE POWERED FUN

EXTRA ACTIVITIES

Organised with external partners and caterer, the west of the Island has something for everyone.

Yoga & Wellbeing

Evening events & celebrations (casino tables, DJ)

Beautiful beaches

Mountain biking

Kayaking

Surfing

Coasteering

Horse riding

Sailing

RIB treasure hunt

Craft & Wellness Activities





EAST AFTON FARMHOUSE

Home to the original Isle of Wight Festival, "The Last Great Event", East Afton Farmhouse is a truly beautiful and unique location often used for weddings, corporate events and retreats – just a 2-minute drive or 20 minute stroll from sister farm Tapnell.

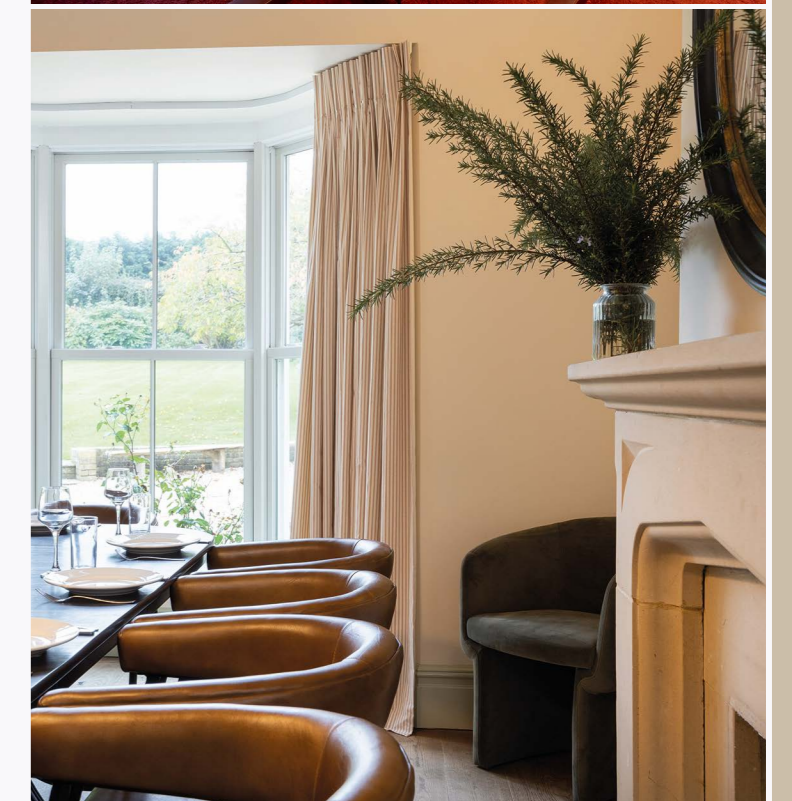
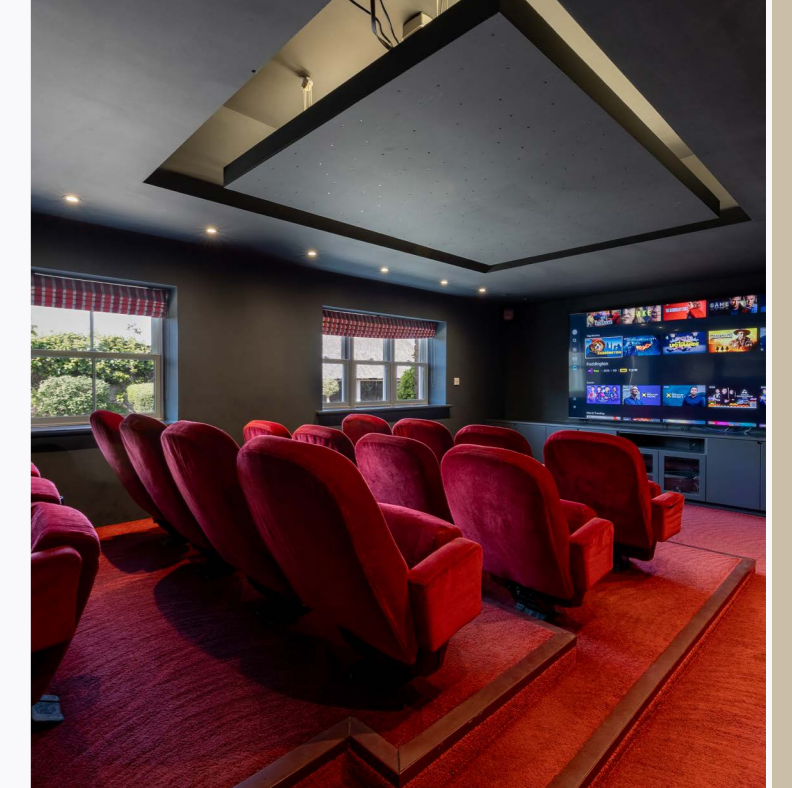
With 3 event barns, spaces can be hired individually or all together to create the perfect corporate event venue.

Prices from £250 for room day hire and £895 overnight

THE 18TH CENTURY FARMHOUSE + ANNEX + PADDOCK ACCOMMODATION

Full of character and charm, with a contemporary twist. The farmhouse and annex has 7 bedrooms and 8 bathrooms and can sleep up to 10 guests in separate beds. The house has a cinema room seating up to 15 people with projector and surround sound – suitable for meetings/presentations, large roof terrace, wrap around gardens, plenty of parking, open fires and a games area.

Accommodation in the Paddocks include delightful Piglets and a Snug, sleeping an extra 5 guests. All units are fully insulated, heated and available year round.





EAST AFTON FARMHOUSE

EVENT BARN

Standing Capacity = 200 Seated Capacity = 170 | Day hire from £995

This brand new spacious event barn is a mixture of rustic exposed brick and timber cladding with a vaulted ceiling. Large glass windows and doors open onto the stone courtyard, giving a bright and airy feel.

Complete with licenced bar, washroom, commercial kitchen, toilet facilities and underfloor heating – this space has it all!

COACH HOUSE

Standing Capacity = 100 Seated Capacity = 60-90 | Day hire from £495

This smaller event barn offers superb flexibility - with underfloor heating, rest rooms and licensed bar + large bi-folding doors that welcome in light and country air, opening out onto a large, decked area and the farmhouse courtyard beyond.

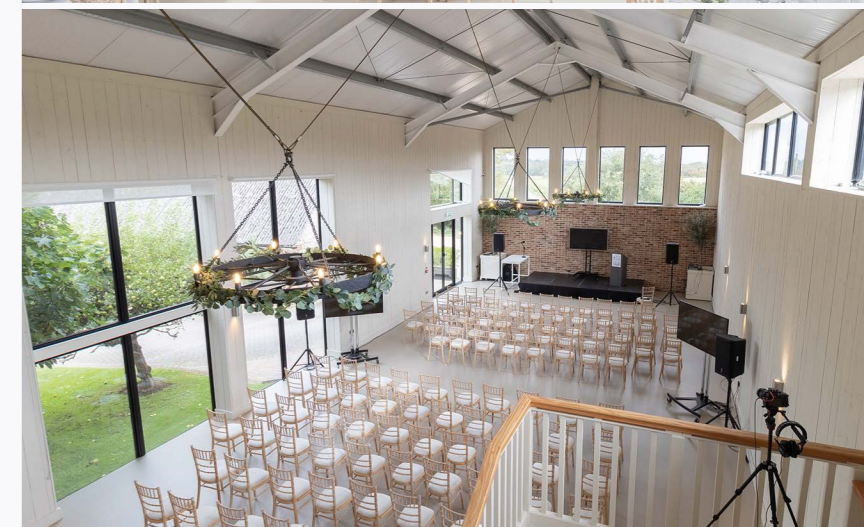
STONE BARN

Standing Capacity = 120 Seated Capacity = 80 | Day hire from £395

This beautiful converted stable, with its stone walls, exposed oak beams and carved chandeliers offers flexibility to be alfresco in the warmer months and enclosed, ready to heat in the colder months.

Day hire for three event barns, courtyard and surroundings from £1495

Venue licensed until mid-night





TAPNELL FARM

THE COW

The Cow at Tapnell Farm serves the finest home-grown and locally sourced produce and is especially known for its delicious award winning burgers and steaks. All dietary requirements catered for.

Situated in a Lofty Swiss Barn at the heart of Tapnell, The Cow is a great space to gather - whether it's for a meeting space with presentations, or for dining and evening entertainment, The Cow is a very versatile space and has been used for product launches, weddings, awards ceremonies, and conferences.

Dining Capacity: 120

Standing Capacity: 200

Meeting (downstairs) seated in rows: 100

Meeting (upstairs) Capacity: 50

Hire prices from £500





TAPNELL FARM

TAPNELL MANOR

Tapnell Manor sits in the centre of the farm, close to The Cow and other farm accommodation.

It is surrounded by beautiful grounds and gardens with ample space inside for small groups.

Inside the house there are plenty of rooms for guests to spread out: spacious break out areas, a games room for the more active, and plenty of open fires for the more relaxed. The large dining room with conference table which can be set up as a meeting space.

The manor has 10 bedrooms, sleeping up to 15 guests, plus bathrooms and a kitchen with an Aga and conservatory with views across the gardens and further to the coast.

Prices from £400 for day hire and £995 for overnight





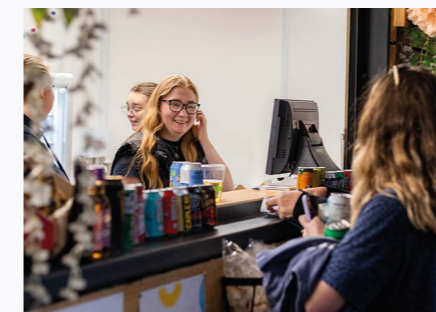
TAPNELL FARM PARK

EVENTS BARN

Located in Tapnell Farm Park, our events barn is a large rustic space providing a range of set up options that can cater for many different sized events. Simple house festoon lighting, woodchip floor and a wooden stage all add to the rustic charm of this barn venue.

Facilities include private access, parking, toilets, box office and a small container bar. Access to AV light/sound options along with additional hire items available to help with your event requirements.

- Capacity:** 500 seated
1000 standing
- Hire:** Dry Hire of the Space
Hire is per day, including the day before to set up.
- Facilities include:** Toilets, private entrance, parking





FOOD + DRINK

All dietary requirements catered for

THE COW BAR + RESTAURANT

Renowned for serving the best burgers and steaks, The Cow can accommodate all dietary requirements and offers flexible dining; breakfasts, lunches, evening meals and great cocktails

EAST AFTON FARMHOUSE

From street food vans to 3 course fine dining, we can cater for all tastes and occasions. Commercial kitchen and private chef.

BBQ, PIZZA + OUTDOOR FOOD

Whether on the lawn outside The Cow Restaurant, in the woodland glade at Tapnell or the courtyard at East Afton Farmhouse, make the most of alfresco dining – especially when spoilt with the stunning sunsets of West Wight!





A BEAUTIFUL NIGHT'S SLEEP

You're spoilt for choice at Tapnell Farm with our award-winning accommodation options! From luxury safari tents and eco pods to Tapnell Manor, we can cater for groups of all sizes – with up to 110 individual beds.



IN A NUTSHELL

Tapnell Farm

Glamping, farm cottages & houses, Tapnell Manor

East Afton

Farmhouse & annex, Paddocks

Whole site

Maximum 110 x separate beds

Outside space

Firepits/pizza oven/bbqs

Farm Shop + food hampers

tapnellfarm.com/stay



TAPNELL MANOR
15 beds

CABINS
7 beds

PODS
1 bed

DAIRYMAN'S COTTAGE
7 beds

SAFARI TENTS
4 beds

PIGLETS
1 bed



MODULOGS
3 beds

DOMES
3 beds

TAPNELL TRAIL
Linking East Afton to Tapnell Farm

BARBECUES

PIZZA OVENS

THE SNUG
1 bed



LET US TAILOR MAKE YOUR PERFECT COUNTRY RETREAT

From conception to delivery, you will have a dedicated Events Co-ordinator to create your bespoke team experience/event.

The team at Tapnell Farm & East Afton Farm are experienced and enthusiastic event pros! From managing festivals to weddings, they have all the skills and can-do attitude needed to ensure that your event runs smoothly.

We will also ensure that all activities are fully risk assessed and shared with you, taking the worry out of planning your event.

CREATING THE BEST EXPERIENCES

Your Own Events Co-ordinator

Supporting you in creating a bespoke team experience.

Award Winning Accommodation

Available for up to 110 guests (depending on the season).

Food Options

Dining at The Cow / private chef / outdoor pizza oven & BBQs.

Indoor and Outdoor Spaces

For team building, breakout sessions, presentations and awards.

A Range of On-site Activities

From active aqua park, padel and pickleball, football and frisbee golf sessions to more relaxing yoga and sound bathing.

Other Activities

Private fitness classes, workshops, guided walks, tree planting, kayaking, coastering, mountain biking, surfing lessons.



GREEN CREDENTIALS

From renewable energy, recycling & upcycling to conservation - we work hard to stay green.

Sustainability is at the heart of everything we do, whether taking water from our bore hole to supply the farm, using the sun to make electricity for hundreds of homes, powering our heating systems with our biomass boiler or growing over 30 acres of new woodland and hedgerows. It's ingrained in everything we do.

The golden rule for us is to pass on our farm in better environmental and productive health than it was at the beginning of our life's tenure.

Here are some of the ways in which we have taken decisive action on green environmental practices and social and ethical choices:

Power

Installed 500kw of renewable solar generation generating more than 500,000kwh annually, power for more than 100 homes.

District heating network powered by sustainably sourced renewable wood pellets.

Air source and ground source heat pumps in new properties and business premises.

Growth of energy crops to produce renewable gas.

Recycling

Compostable and biodegradable packaging.

Recycle all farm plastics and scrap metals.

Repurposed former farm buildings to regenerate.

Recycle used Aqua Park wetsuits.

Conservation

Maintain and promote miles of footpaths and bridleways in the surrounding countryside.

Two new lakes to better manage the water course and provide habitats for wildlife.

Planted miles of hedgerows and thousands of plants, shrubs and trees.

Large field margins for greater biodiversity of flora and fauna.

Installed owl, squirrel, tit and bat boxes.

A MINI ENGLAND

From coastal towns to sandy beaches and everything in between, 'The Island' as it's affectionately known has been labelled 'England in a nutshell', and boasts all the best bits that the UK has to offer in one beautifully wrapped package.

THE ISLE OF WIGHT

Located off the south coast of England, the Isle of Wight offers pristine beaches, historic landmarks, bustling coastal towns and villages, and a variety of outdoor activities.

The Island's warm climate for most of the year attracts those seeking winter sunshine in the UK. For active visitors there are more than 500 miles of established trails on the Island, so you can enjoy leisurely walks and rides on horseback or bike.

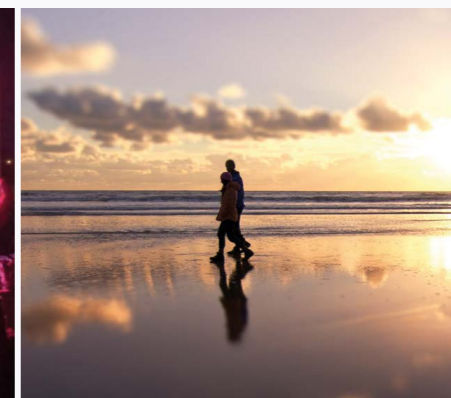
The Island is also popular in the winter and spring with Surfers and in the summer many SUP boarders take to the waters around the island.

If wild swimming is your thing... there's plenty of sea to dip your toes in all year round.

JUST 2 HOURS FROM LONDON

The Isle of Wight is just a few miles from the UK mainland, and unless you're traveling by yacht or helicopter, your Isle of Wight visit will start with a ferry/hover crossing. Convenient and quick, you can come by car, foot or bike, no passport required!

Easily accessible by train from London, with frequent services from London Waterloo and Victoria.



TAPNELL FARM

— ISLE OF WIGHT —

Corporate Away Days & Retreats

For more information and to make your booking 01983 758729 | corporate@tapnellfarm.com

www.tapnellfarm.com